



## CONTINUOUS BELT STEAM & DRAW FURNACE



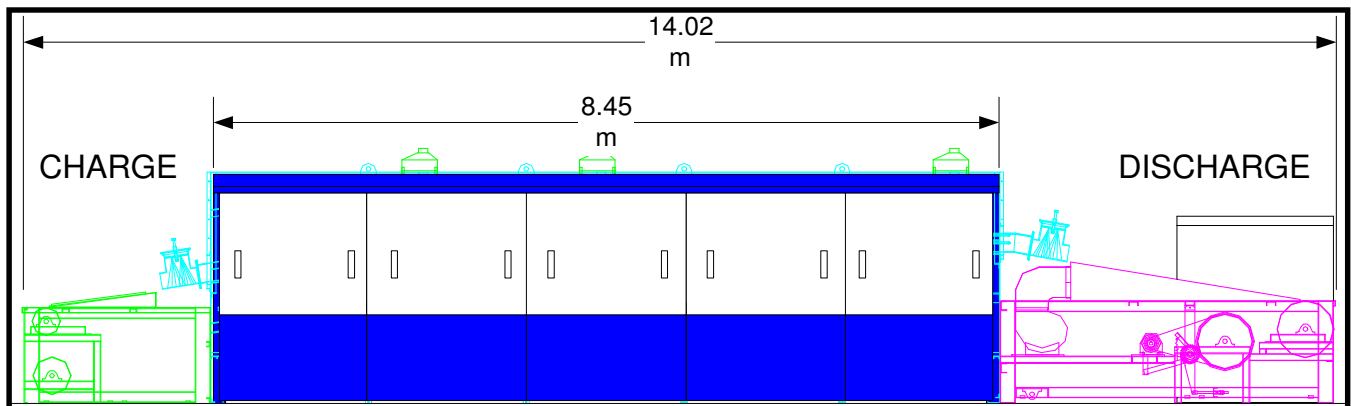
### Design Features:

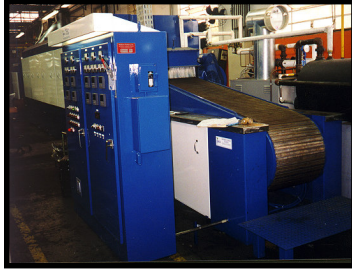
- Heavy-duty steel construction
- Modular removable roof
- Tubular heating elements
- Ceramic fiber modules
- Heavy-duty hearth and piers of ceramic firebrick
- Silicon Carbide hearth plates
- Vented side covers
- » Long-lasting durable construction
- » Easy muffle maintenance
- » Quick heating element replacement
- » Optimized thermal profile
- » Low thermal mass/storage/heat loss
- » Durable muffle supports
- » Convection cooled power connections

### Continuous Belt or Strip Processes:

Repeatable and Reproducible product properties  
Highly productive energy efficient designs  
Rugged and Reliable construction

Electric or gas-fired configurations  
Gas-fired steam boiler  
Water preheat tank



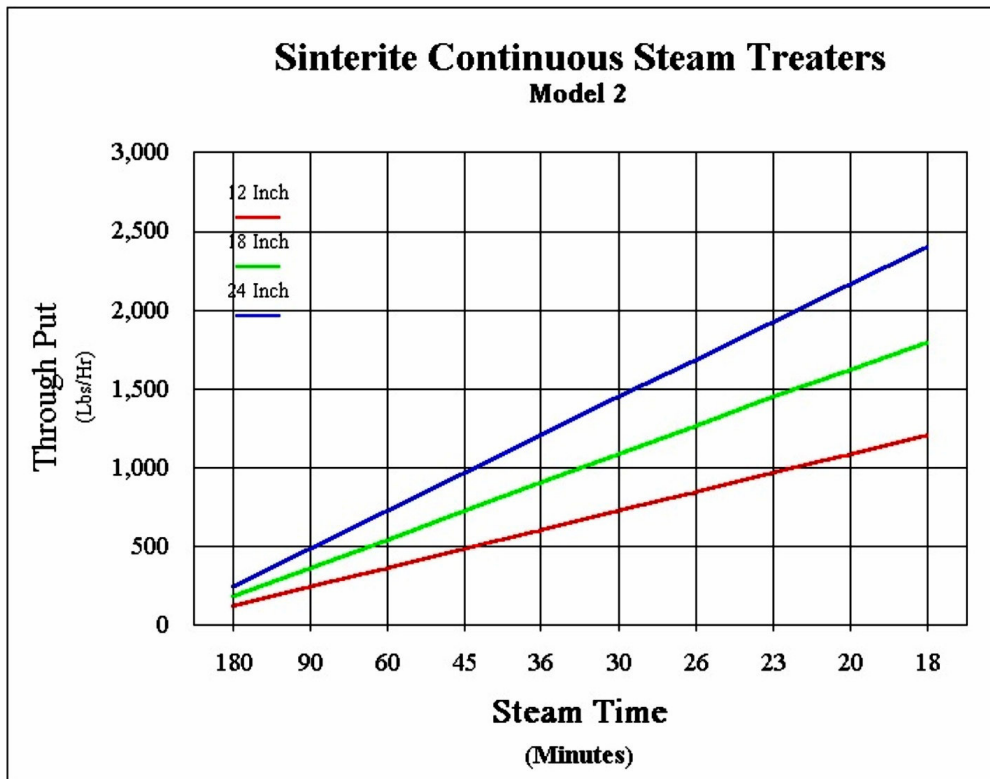


## Multi-Zone "Humpback" Design



## FURNACE CONFIGURATIONS

Belt Width	Control Zones	Control Zones	Power	Loading (maximum)	45 min. Steam Cycle	60 min. Steam Cycle
mm	Preheat	Steam	Kw	kg/m <sup>2</sup>	kg/hr	kg/hr
300	1	3	144	117	141	114
450	1	3	220	117	212	177
600	1	3	300	117	283	228



**Sinterite Furnace Division**  
310 State Road  
St. Marys, PA 15857

Phone: 814-834-2200  
Fax: 814-834-9335  
Email: [furnace\\_sales@gasbarre.com](mailto:furnace_sales@gasbarre.com)

[www.gasbarre.com](http://www.gasbarre.com)